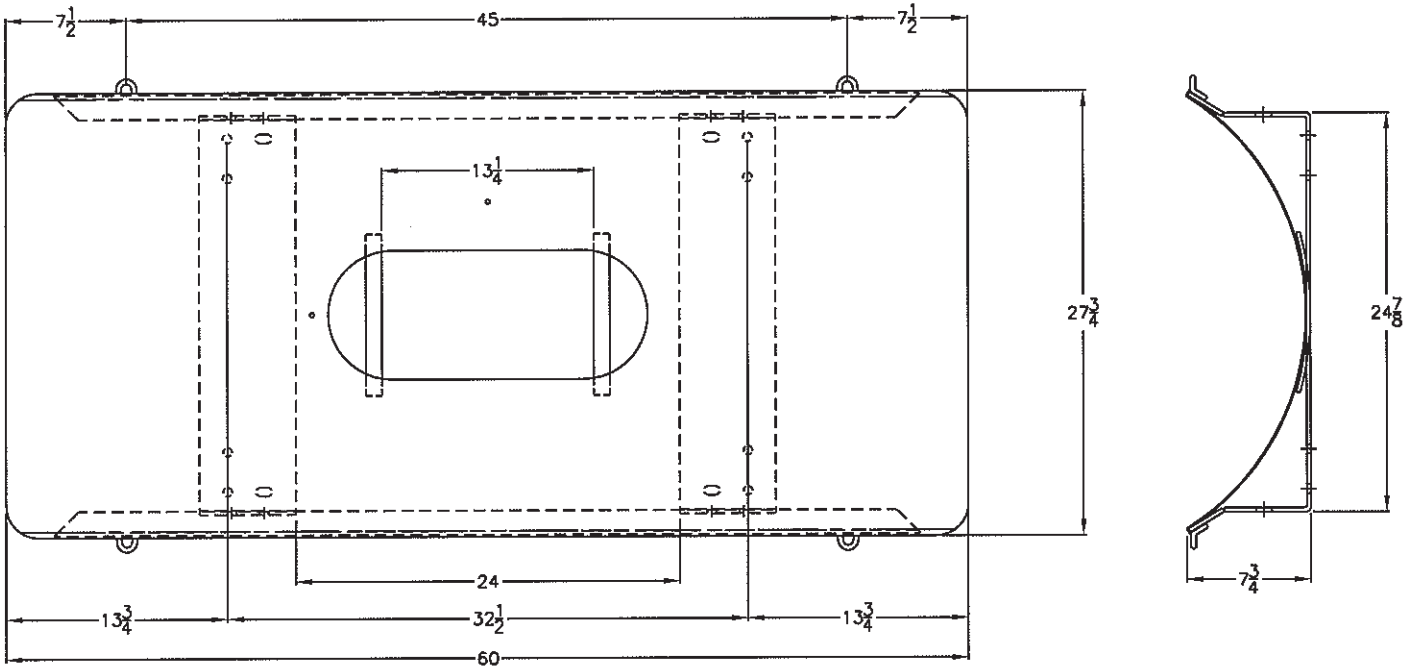



REVISIONS				
ZONE	REV	DESCRIPTION	DATE	APPROVED



PARTS BAG CONTENTS:

- (2) POLY STRAP, 2" X 96"
- (4) BENT BUCKLE, 2"
- (4) J-BOLT, 1/2"
- (8) HEX NUT, 1/2"

JTP 27FEB02		 ST. BONIFACIUS, MN 200-32 SADDLE ASSEMBLY		
		SIZE A	FSCM NO.	DWG NO.
SCALE 1/12		SHEET		