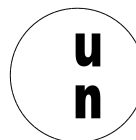
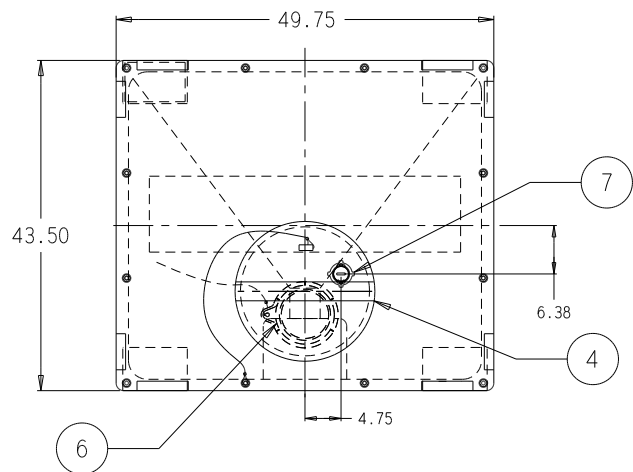
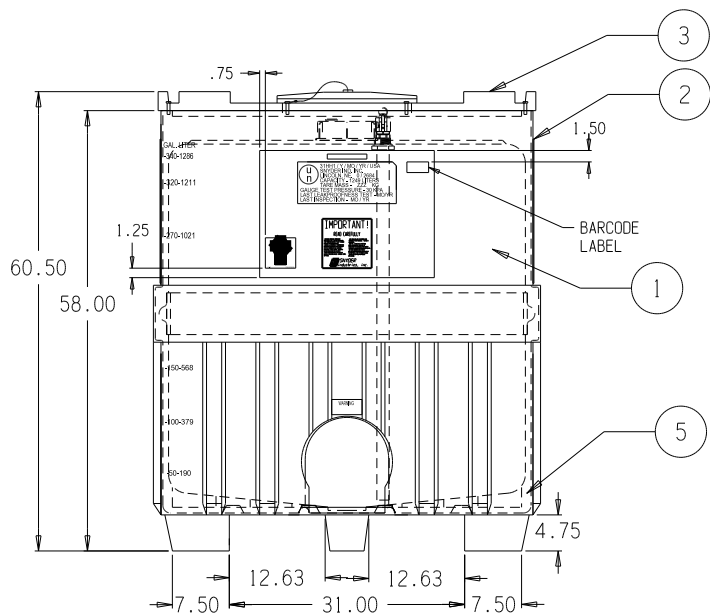


CUSTOMER APPROVAL  
SIGNATURE \_\_\_\_\_  
DATE \_\_\_\_\_  
DRAWING IS INVALID UNLESS SIGNED



31HH1/Y/MO/YR/USA  
SNYDER IND. INC.  
LINCOLN, NE. 68504  
CAPACITY-1249 LITERS  
TARE MASS-ZZZ KG

GAUGE TEST PRESSURE-30 KPA  
LAST LEAKPROOFNESS TEST- MO/YR  
LAST INSPECTION- MO/YR



8 ASSEMBLY KIT NOT SHOWN

\* DENOTES A CUTSHEET EXISTS FOR THIS ITEM IN THE CUTSHEET DATABASE.  
% DENOTES THIS IS A LINE ITEM IN THE CONFIGURATION.  
# DENOTES THIS IS A SEPERATE LINE ITEM ON THE ORDER. (TO SHIP LOOSE)

9	SPECIAL TRIM OPERATION NEEDED	1	00000004
* 8	STANDARD IBC ASSEMBLY KIT	1	34701262
* 7	1IN STRAIGHT DRAWTUBE 330 ECONO/DUECE	1	34701334
* 6	ASM SCREW CAP 7IN PE2X2IN & 2X3/4IN CFLX	1	34701003
* 5	ASM PILLOW 330 DEUCE HD/NAT	1	6996100B95401
* 4	ASM PLUG SCREW CAP 17IN OLD STYLE HD/NAT	1	6996200B95401
* 3	ASM TOP PROTECTOR DEUCE 17 CAP HD/NAT	1	6996000B95401
* 2	ASM 330 DEUCE CAGE HD/NAT	1	6994400B95402
* 1	TK 330 GAL DEUCE BOTTLE NOBDR HD/NAT	1	6990100R972
ITEM#	DESCRIPTION	QTY.	P/N

ALL DIMENSIONS ARE NOMINAL AND SUBJECT TO CHANGE WITHOUT NOTICE.  
© SNYDER INDUSTRIES, INC., 2017  
SNYDER INDUSTRIES INC. CLAIMS PROPRIETARY RIGHTS IN THE MATERIAL DISCLOSED HEREON. NEITHER THIS DRAWING NOR ANY PRODUCTION THEREOF MAY BE USED TO MANUFACTURE ANYTHING SHOWN HEREON WITHOUT PERMISSION IN WRITING FROM SNYDER INDUSTRIES INC. TO USER SPECIFICALLY REFERRING TO THIS DRAWING.

SEE BILL OF MATERIALS FOR A COMPLETE LIST OF COMPONENTS INCLUDING POWDER AND PIGMENT. ALL DIMENSIONS, DESIGNS, AND INFORMATION ON THIS PRINT MUST BE CONSIDERED PROPRIETARY TO SNYDER INDUSTRIES, INC. AND MAY NOT BE USED, COPIED, OR DISTRIBUTED WITHOUT WRITTEN PERMISSION OF AN OFFICER (OR HIS AGENT) OF THE FIRM.

SNYDER INDUSTRIES INC. LINCOLN, NE. 68504 PRODUCTION PROCESS INSTRUCTIONS  
PART DESCRIPTION:  
ASM TK 330 DEUCE NOBDR  
DRAWN BY:SRB | DATE:04/21/2017 | PART NUMBER: % 6990100B97203