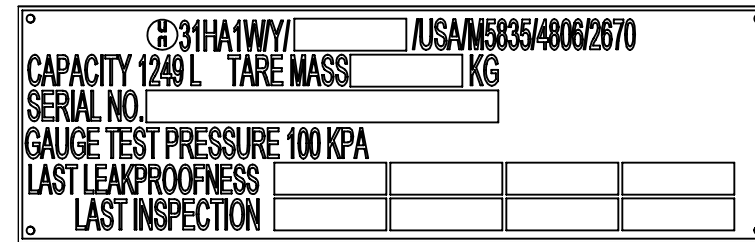
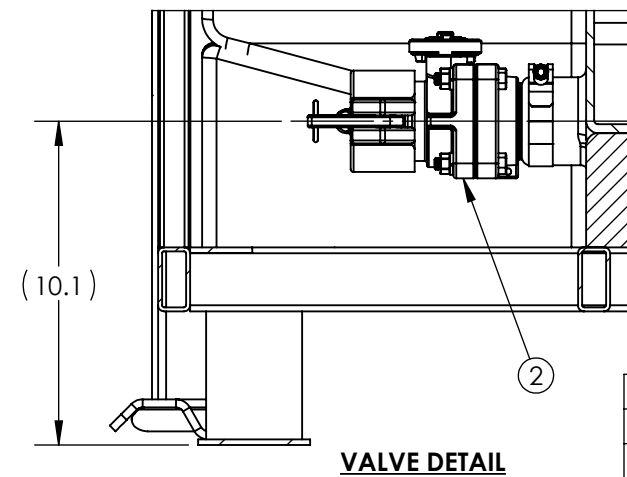
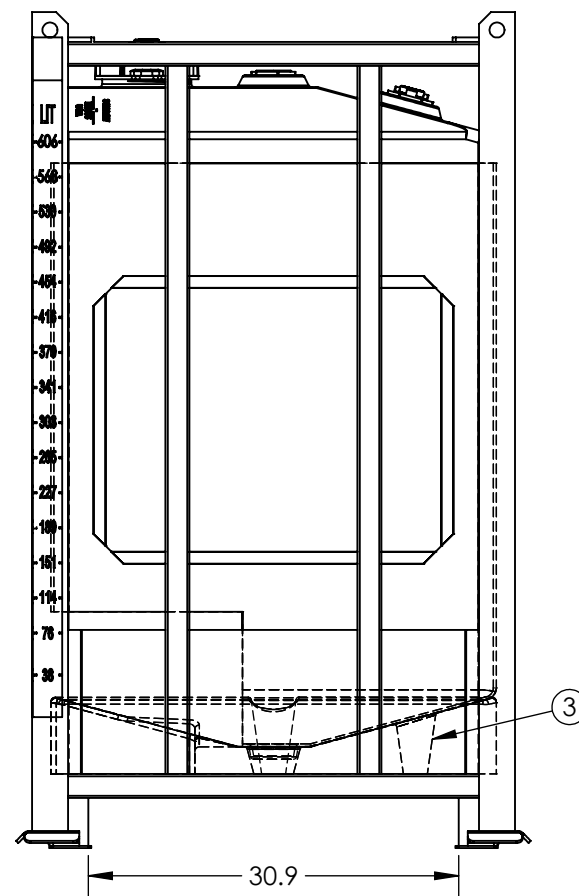
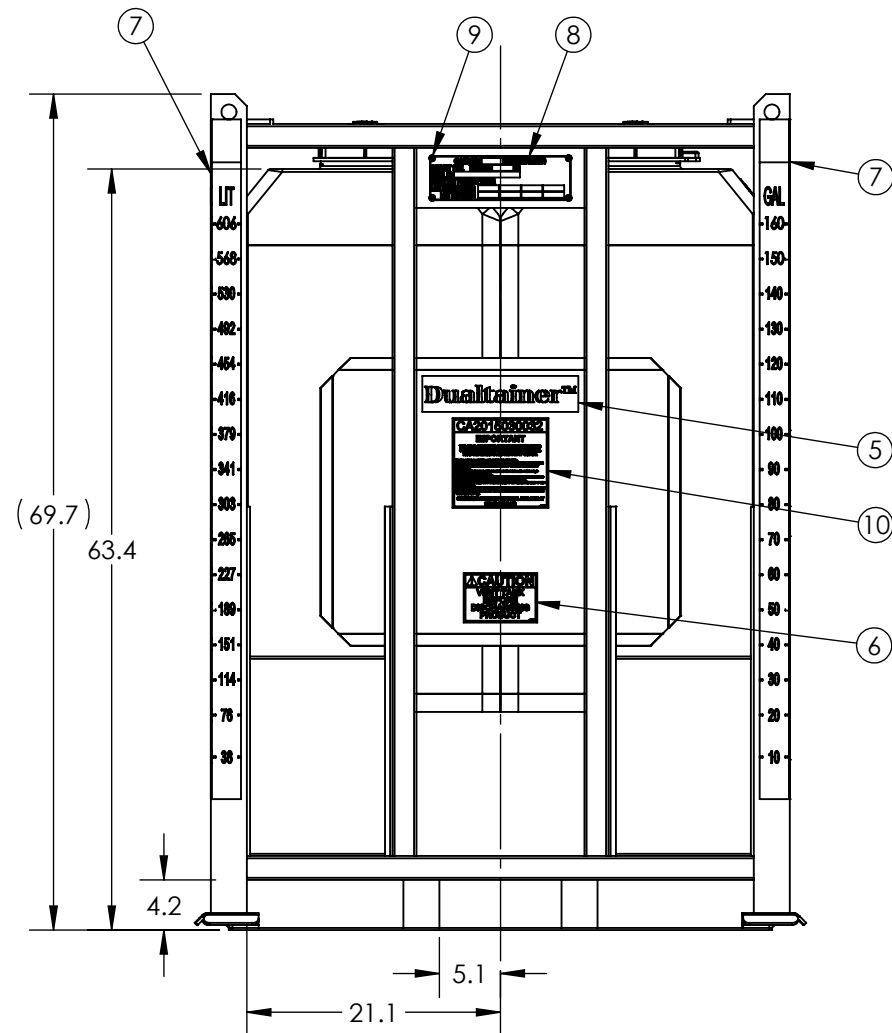
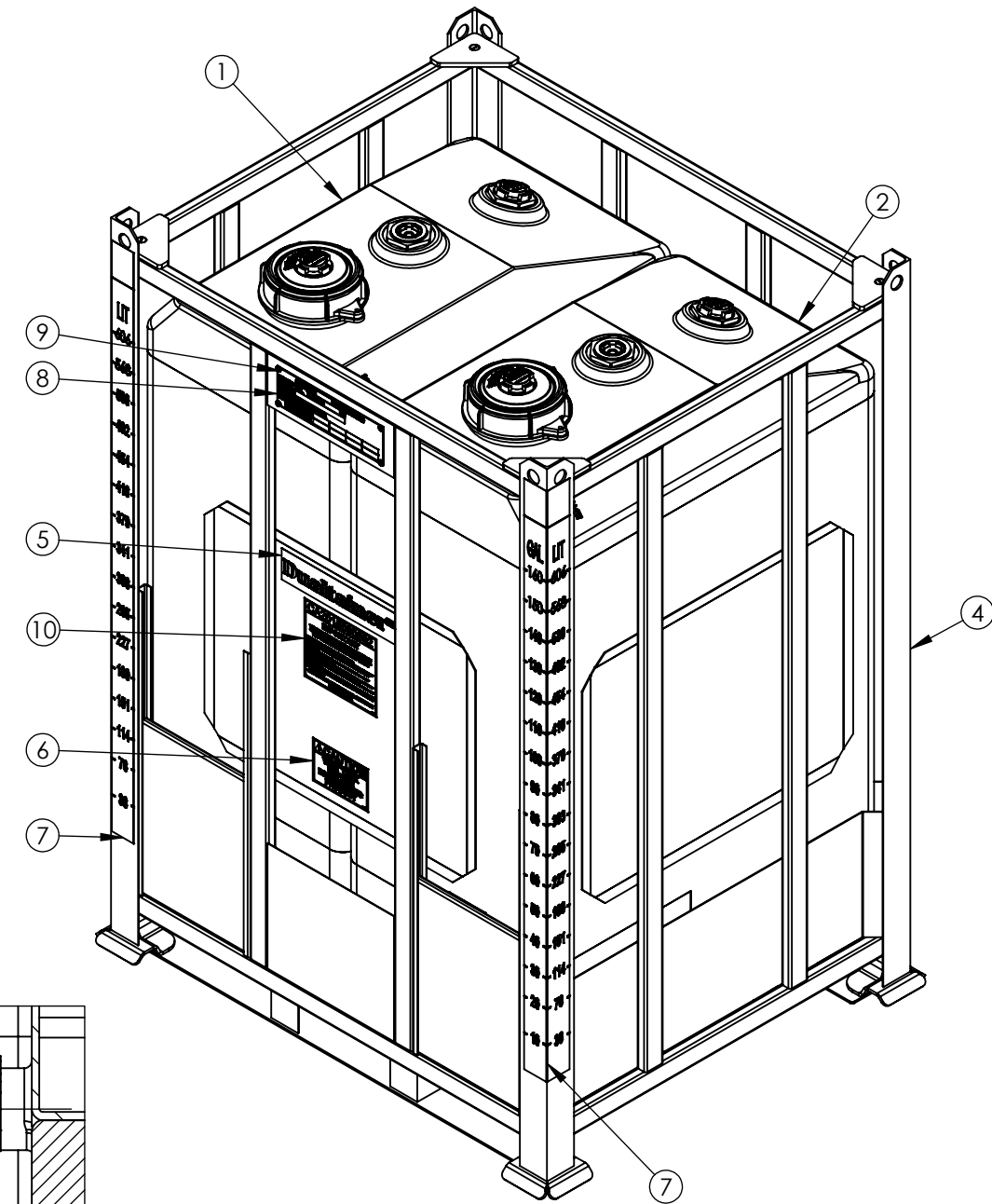


U.N. MARKINGS TO READ:



99700617 DETAIL

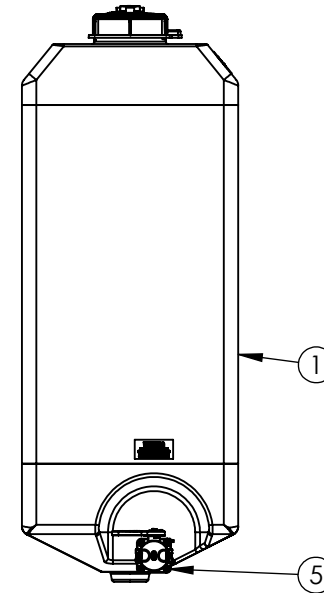
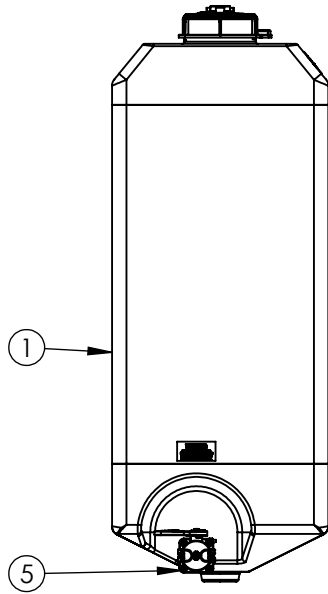
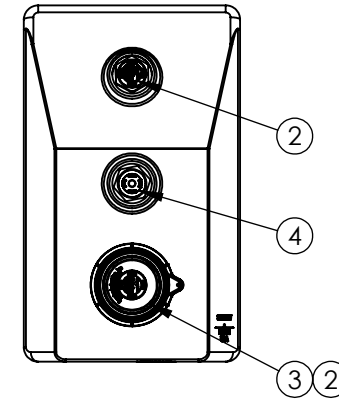
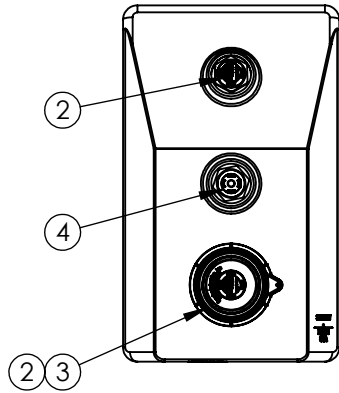


10	1	99700617	DECAL DUALTAINER CA2015030032
9	4	35500057	RIVET BLIND 1/8 X .500
8	1	36500685	TAG UN DOT 31HA1W DUALTAINER
7	2	99700590	DECAL GALLONAGE DUALTAINER
6	1	99700262	DECAL CAUTION VENT TK BEFORE DISCHARGING
5	1	99700589	Decal-Dualtainer
4	1	34901075	ASM COMP IBC DUALTAINER BDR CS/BLUE
3	1	6998000R954	PILLOW DUALTAINER
2	1	6997811B97205	ASM BTL DUALTAINER RIGHT SUMP WD EPDM
1	1	6997801B97205	ASM BTL DUALTAINER LEFT SUMP WD EPDM

ITEM NO.	QTY.	PART NUMBER	DESCRIPTION	REVISION
DO NOT SCALE		DRAWN BY		<b>C</b> SHEET 1 OF 2
STATUS: <b>Released</b>		ET3		
© SNYDER INDUSTRIES INC., 2016			TITLE: <b>ASM DUALTAINER BDR NAT/BLUE EPDM</b>	REVISION: <b>C</b>
<small>ALL DIMENSIONS, DESIGNS, AND INFORMATION ON THIS PRINT MUST BE CONSIDERED PROPRIETARY TO SNYDER INDUSTRIES, INC. AND MAY NOT BE USED, COPIED, OR DISTRIBUTED WITHOUT WRITTEN PERMISSION OF AN OFFICER (OR HIS AGENT) OF THE FIRM.</small>			(402) 467-5221 www.snydermet.com	PART NO. <b>6997900B97207</b> ENG. ID. <b>D006163</b>

ALL DIMENSIONS ARE IN INCHES, NOMINAL, & SUBJECT TO CHANGE WITHOUT NOTICE.  
ALL DIMENSIONS ON ROTATIONAL MOLDED PARTS ARE SUBJECT TO A ± 3% TOLERANCE.

ITEM NO.	QTY.	PART NUMBER	DESCRIPTION	ITEM NO.	QTY.	PART NUMBER	DESCRIPTION
1	1	6997801R	BTL DUALTAINER LEFT NBDR	1	1	6997811R	BTL DUALTAINER RIGHT NBDR
2	2	34700822	ASM VENT PE 2IN VACUUM SII W/EPDM	2	2	34700822	ASM VENT PE 2IN VACUUM SII W/EPDM
3	1	34300314	CAP 6IN HDLPE W/2IN NPS W/EPDM	3	1	34300314	CAP 6IN HDLPE W/2IN NPS W/EPDM
4	1	34700340	ASM PLUG 2IN NPS BUNG W/EPDM-WHITE	4	1	34700340	ASM PLUG 2IN NPS BUNG W/EPDM-WHITE
5	1	34702616	ASM VALVE 2IN 4-BOLT STUBBY 100KPA	5	1	34702616	ASM VALVE 2IN 4-BOLT STUBBY 100KPA



ALL DIMENSIONS ARE IN INCHES, NOMINAL, & SUBJECT TO CHANGE WITHOUT NOTICE.  
 ALL DIMENSIONS ON ROTATIONAL MOLDED PARTS ARE SUBJECT TO A ± 3% TOLERANCE.

DO NOT SCALE		DRAWN BY		TITLE:	<b>ASM DUALTAINER BDR          NAT/BLUE EPDM</b>	REVISION
STATUS: <b>Released</b>		ET3		REVISION		<b>C</b>
© SNYDER INDUSTRIES INC., 2017			(402) 467-5221 www.snydernet.com	PART NO.	<b>6997900B97207</b>	SHEET
<small>ALL DIMENSIONS, DESIGNS, AND INFORMATION ON THIS PRINT MUST BE CONSIDERED PROPRIETARY TO SNYDER INDUSTRIES, INC. AND MAY NOT BE USED, COPIED, OR DISTRIBUTED WITHOUT WRITTEN PERMISSION OF AN OFFICER (OR HIS AGENT) OF THE FIRM.</small>				ENG. ID.		<b>D006163</b>