

Flowmaster

BIN AND SILO SYSTEMS



COST EFFECTIVE, VERSATILE AND DURABLE -
THE INDUSTRY'S BEST DRY HANDLING VALUE



Sii **SNYDER**
INDUSTRIES, INC.

SOLUTIONS IN DRY HANDLING

FLOWMASTER PORTABLE HOPPER BINS

Multiple Top-Opening options in sizes up to 22" or a complete open-top.

Lifting/Stacking Alignment Lugs provide top lifting capability and enables containers to be stacked easily and safely.

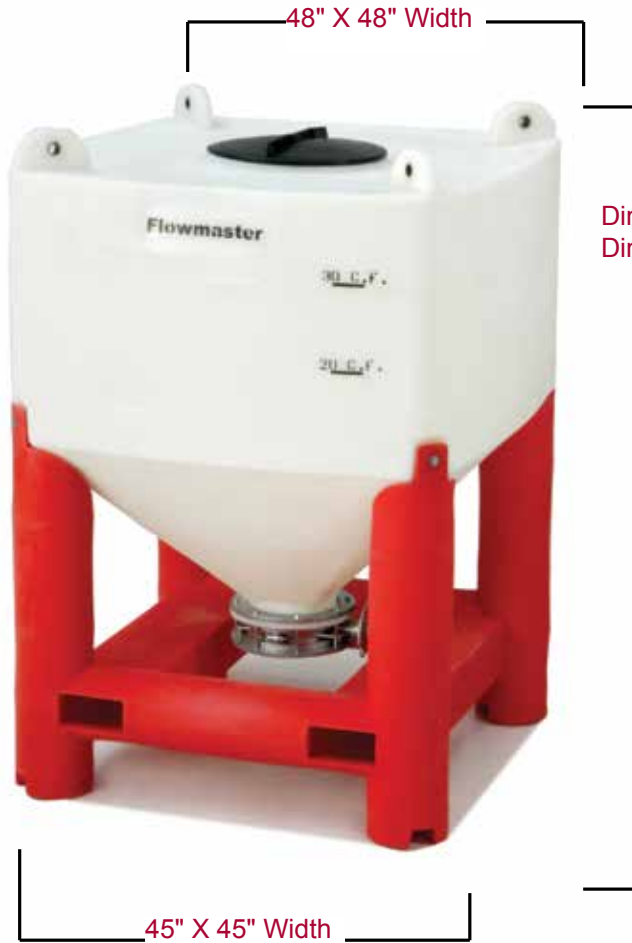
Proprietary Company Logo or Product Information can be permanently embossed within the container sidewall.

1/2" Nominal Wall Thickness in tank and base provides superior resistance to impacts and environmental stress cracking.

45° or 60° Standard Hopper Angles- other hopper angles available upon request.



One piece SEALED sanitary base design is 2-way forklift and pallet jack accessible and comes in a variety of colors to help designate specific applications.



U.S. Patent # 7,475,796

Translucent Polyethylene Bottle allows users to view material usage through tank wall without using level indicator.

**Dimension "A" 45° Hopper
Dimension "B" 60° Hopper**

HDPE Material Construction

- Eliminates corrosion and the associated maintenance costs.
- Complies with applicable FDA, NSF, and USDA standards

UN/DOT Certified IBCs (pending) for use in the transportation of hazardous materials.

Multiple Discharge Openings - 4", 8" 10" 12" and other custom sizes.

Multiple Valve Options - including:

- Butterfly valve
- Sanitary Butterfly valve
- Iris valve
- Slide Gate
- Other

| Bin Size | Dimension A 45° | Bin Size | Dimension B 60° |
|--|--------------------|---------------|--------------------|
| 25 Cubic Feet | 56.00" | 30 Cubic Feet | 70.25" |
| 40 Cubic Feet | 68.50" | 48 Cubic Feet | 82.75" |
| 50 Cubic Feet | 77.25" | 58 Cubic Feet | 91.50" |
| 60 Cubic Feet | 85.75" | 68 Cubic Feet | 100.00" |
| 80 Cubic Feet | 101.75" | - | - |
| Bin capacities are based on water-filled capacity. | | | |
| Other custom sizes, hopper angles and dimensions available upon request. | | | |

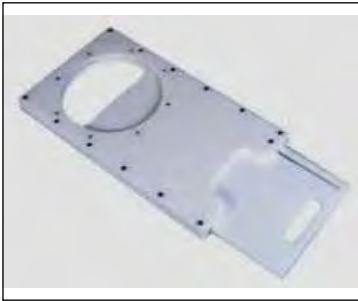


No top lift design with 22" sanitary lid.



FLOWMASTER OPTIONS AND ACCESSORIES

FLOWMASTER bins and silos are available with a complete line of ancillary equipment and accessories including:



All Poly Slide Gates



Butterfly Valves



Aluminum Slide Gate



Iris Valves



Open and Closed Top Designs
Multiple top opening configurations are available to meet specific application requirements.



Discharge Stations
are designed to provide dust free transfer of dry materials. Options include screw conveyors and vibratory feeders.



Optional Base Colors
Thick walled, all-plastic base is available in a variety of colors to help designate specific application.



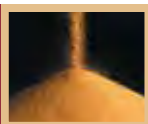
Molded-in Company or Product Information can be permanently embossed with proprietary company information.



Sanitary Base Design



Multiple Top Lid Options and Accessories



FLOWMASTER SEMI-BULK STORAGE SILOS

Top Lifting Ears for crane and hoist hook attachments. In addition to reducing installation costs and increasing safety, lifting lugs allow you to off load the tank and put it into place with ease and without damage to the tank.

Sanitary Tie Down Lugs available with seismic UBC2006/CBC2007 150 mph wind restraint tie down systems.

Minimum 1/2" Wall Thickness for superior resistance to impacts and environmental stress cracking.

Multiple Discharge Size Opening to accommodate your discharge fitting choices.

Large Molded Flat Areas are designed to accommodate a variety of top mounted fittings and accessories.

One Piece, Seamless Tank Construction provides uniformity and reduces potential stress points.



"Ultra Smooth" and Durable Interior Surface provides a long-life vessel with excellent material flowability.

A Variety of Diameters and Sizes available up to 1,000 cubic feet.

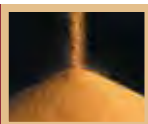
Standard Cone Slopes of 30°, 45°, and 60° provide excellent material discharge.

100% HDPE Material Construction complies with FDA Reg. 177.1520, NSF Standard 61, and USDA standards and eliminates corrosion concerns and associated maintenance costs.

OSHA-Approved Ladder Assembly (option) - FRP and steel assemblies with hand rails and cages available.

Manyways - 18" to 24", vented and sealed options.

| Tank - 45° | Diameter | Height |
|---|----------|---------|
| 130 Cubic Feet | 64" | 102.75" |
| 200 Cubic Feet | 64" | 140.75" |
| 500 Cubic Feet | 90" | 213.30" |
| 750 Cubic Feet | 90" | 286.90" |
| 950 Cubic Feet | 90" | 314.90" |
| 1000 Cubic Feet | 90" | 376.50" |
| Silo capacities are based on water-filled capacity. | | |
| OTHER Custom sizes available upon request. | | |



DRY HANDLING BINS

Steel and plastic bin designs are available with a variety of options and sizes to meet the unique handling requirements of dry powder and granular materials. Bins can be configured with different slopes, discharge/fill openings, and valves. A full line of accessories, discharge stand, tumblers and filling stations is also offered to optimize material flow.



SUPERIOR PRODUCT DURABILITY AT THE LOWEST POSSIBLE COST

As a recognized leader in the design and manufacturing of material handling vessels, Snyder has perfected their rotational molding process technology to build **extra thick (.500"+) walled HDPE** containers with optimum physical property performance, which translates into longer lasting, more durable containers.

Snyder's unique processing techniques have resulted in container service lives extending beyond 20 years in some cases. Most importantly, Snyder's Flowmaster bins and silos deliver many performance advantages over other alternative material constructions, at a price that makes sense.

STEEL MATERIAL HANDLING HOPPER BINS

Available in both Carbon and Stainless, Snyder offers steel hopper bins that are the perfect bulk handling solution for a variety of applications. Snyder's steel IBC hopper bins are fabricated with some of the most sophisticated manufacturing automation available. This state-of-the-art robotic manufacturing process ensures consistent high weld quality and assurance of container integrity. Steel bins can be configured to meet the most stringent design requirements.

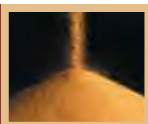
| Capacity | Overall Height | Hopper Angle |
|---------------|----------------|--------------|
| 30 Cubic Feet | 47.50" | 45° |
| 45 Cubic Feet | 62.25" | 45° |
| 62 Cubic Feet | 75.00" | 45° |
| 78 Cubic Feet | 88.50" | 45° |

All dimensions in inches and based on 45° hopper with 8" Valve.



UNPARALLELED DESIGN FLEXIBILITY AND ENGINEERING SUPPORT

As a dry materials processor, Snyder understands the importance of design flexibility and engineering support to ensure a dry handling material system integration meets specific application requirements. Flowmaster bins and silos are manufactured and marketed with a variety of different design, accessory, and ancillary equipment options, so that engineers, contractors and end users have a broad range of choices in making their final dry handling system feature decisions. In an effort to help guarantee the final solution choices are optimized, Snyder sales representatives and engineering personnel supplement the whole project process, which culminates in the creation of the final dry approval drawing(s).



WWW.SNYDERNET.COM

ADDITIONAL SOLUTIONS IN BULK HANDLING



POLY COMBO BINS

Economical bulk bins are ideal for handling both durable and perishable goods. Available in single and double wall construction, that can be stacked up to three units high to save space in storage and transportation.



HEAVY LIFT BIN

Heavy duty top lift hopper lid designed specifically where lifting of heavy materials is critical, such as off-shore and catalyst markets.



VISCOUS LIQUID HANDLING SOLUTIONS

Specifically designed for viscous liquids used in a variety of industry. Snyder has a wide array of IBC design types to promote better drain flow of materials with varying levels of viscosity.

ONE SOURCE DOES IT ALL

Whether you are a manufacturer or distributor, Snyder Industries can help you improve the function, economics and performance of your company's bulk handling systems.



6940 "O" Street, Suite 100 • Lincoln, Nebraska 68510 • 402-467-5221 • FAX: 402-465-1220 • www.snydernet.com

Other manufacturing facilities:

Marked Tree, Arkansas • Chowchilla, California • Philippi, West Virginia • Mancelona, Michigan • Bensenville, Illinois, West Chicago, Illinois

Printed 1/2014

V I S I T WWW.SNYDERNET.COM FOR MORE INFORMATION



WWW.SNYDERNET.COM