

# Stratis®

Plastic Pallets

*Product Catalog*

[www.pallets.com](http://www.pallets.com)



# Global *Stratis*faction

## Stratis Plastic Pallets are:

### Durable

10+ years expected life,  
one piece solid wall molded.

### Cost Effective

Payback can be seen in a matter of weeks. No nails or splinters. Reduced spoilage and product damage.

### Clean and Sanitary

Eliminates wood particles, moisture, odors and chemicals from transferring onto your products.

### Ergonomical

Easy to use and lightweight. Simpler for operators to handle. Reduced risk of injury to employees.

### Safety

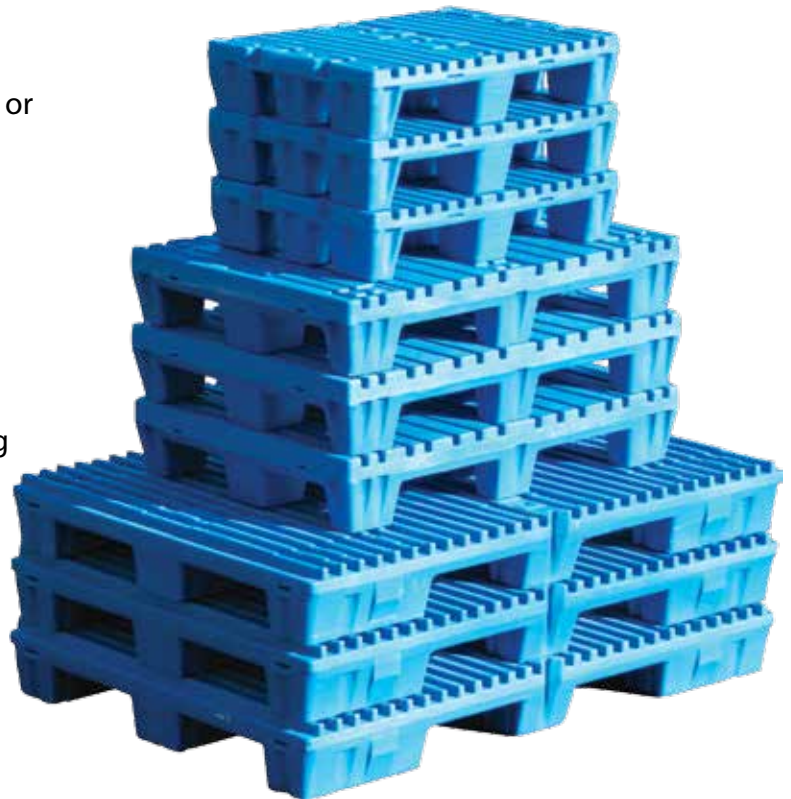
Internationally patented Deck-Lok™ safety stacking system allows pallets to be moved empty without fear of sliding.

### Great Look

Impressive for plant tours and customers. Shows commitment to cleanliness, safety, quality and productivity.

### Environmentally Friendly

Molded in PE/plastic - a recyclable material.



Headquarters:

4700 Fremont Street • Lincoln, NE • 68504 USA • Fax: +1 402-465-1220

1-800-PALLETS (725-5387) [USA and Canada]

All Other Inquiries Call: +1 317-328-8000



# Table of Contents

Pallets by Size . . . . . 4-9



Roll Pallets . . . . . 10-12



Double Sided . . . . . 14



Shuttle Pallets . . . . . 14



Stratis Sleeves . . . . . 15



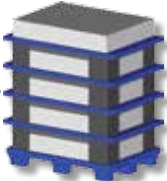
Export Pallets . . . . . 16



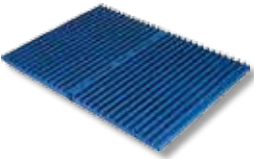
Drum Pallets . . . . . 17



Racking & Corner Boards . . . . . 17



Pallet Boards . . . . . 18



Visit us @  
[www.pallets.com](http://www.pallets.com)

Contact us @  
[sales@pallets.com](mailto:sales@pallets.com)

# Pallets by Size

These pallets are well suited for all industries including printing, automotive, folding carton, corrugated, die cutting, newspapers, food, web press, metal stamping, pharmaceutical, converting and distribution. If you don't see a pallet that fits your requirements, please contact us regarding a custom designed plastic pallet to fit your needs.

## Key Features:

- Stretch wrap-able with "Stretch Wrap Retention Wings" on many styles.
- Optional molded in Logo Nameplates available on some models
- UV sunlight protection for outdoor storage
- USDA/FDA approved
- HACCP internationally approved
- Conveyorable on most systems
- Rackable in unsupported racks

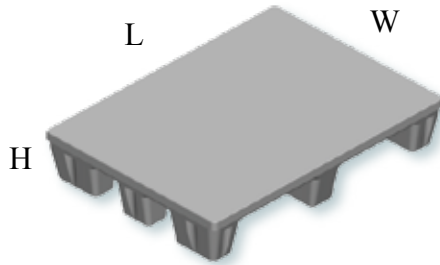
Pallet Styles:



Part Number

L" x W" x H"

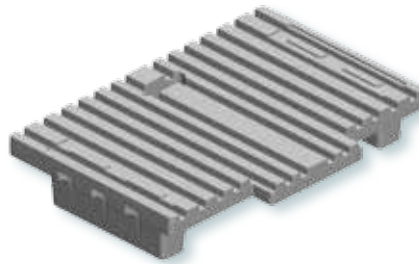
L x W x H cm



P2921RS29-N

29.4" x 21" x 6.3"

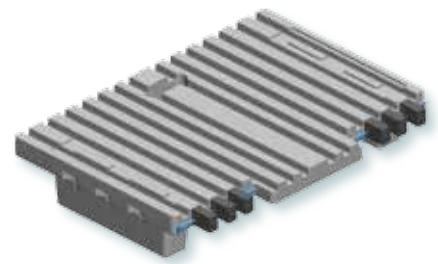
74.7 x 53.3 x 16 cm



P2921RS29-NS

29.4" x 21" x 6.3"

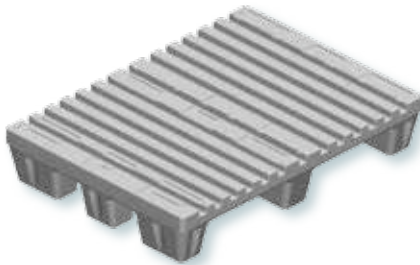
74.7 x 53.5 x 16 cm



P3022RS00

29.5" x 21.5" x 6.3"

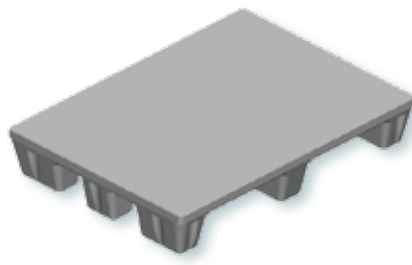
75 x 54.6 x 16 cm



P3022S00

29.7" x 22" x 5.5"

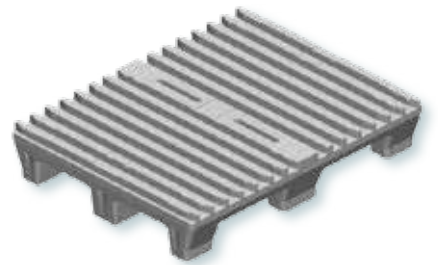
75.4 x 56 x 14 cm



P79RS00-A

31.3" x 24.3" x 6.7"

79.4 x 61.6 x 17 cm



P3124RS00

31.3" x 24.5" x 6.3"

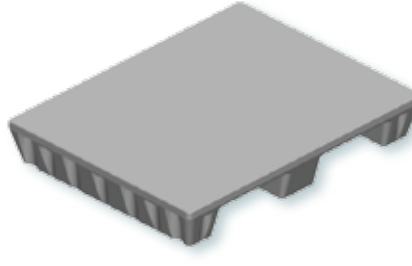
79.5 x 62.3 x 16 cm



P3124S00

31.3" x 24.5" x 5.5"

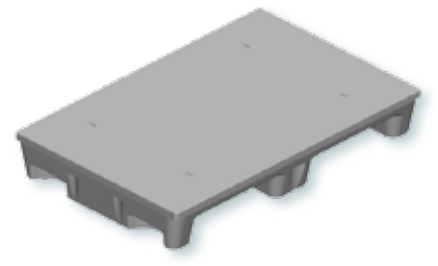
79.5 x 62.3 x 14 cm



P3523S00

35.5" x 23.5" x 6"

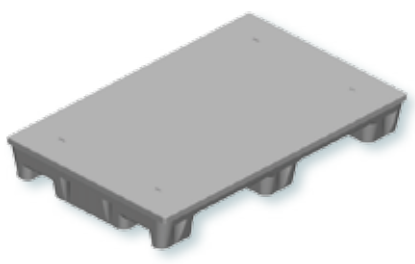
90.2 x 59.7 x 15.2 cm



P4026S00

40.5" x 26.5" x 6"

102.9 x 67.3 x 15.2 cm



P4029RS00

40.5" x 28.75" x 7"

103 x 73 x 18 cm



P4029RS00-A

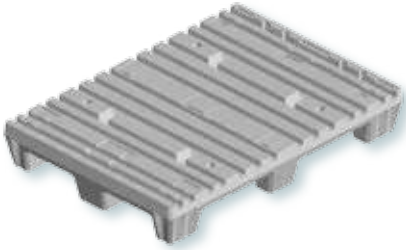
40.5" x 28.75" x 7"

103 x 73 x 18 cm



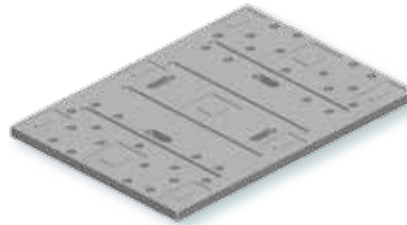
**P4029RS00-BND**

40.5" x 28.75" x 7"  
103 x 73 x 18 cm



**P4029S00-CAP**

41" x 29" x 1.8"  
104.1 x 73.7 x 4.6 cm



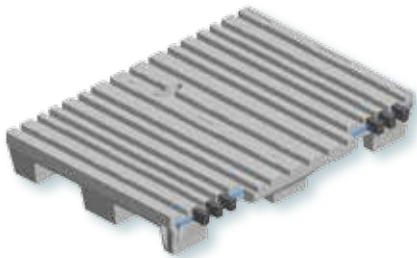
**P4131RS41-N**

41.5" x 31" x 7"  
105.4 x 78.7 x 17.8 cm



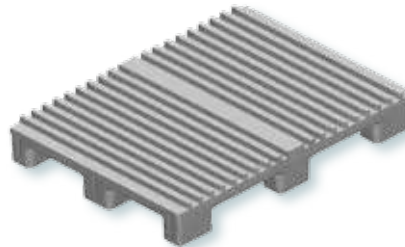
**P4131RS41-NS**

41.5" x 31" x 7"  
105.4 x 78.7 x 17.8 cm



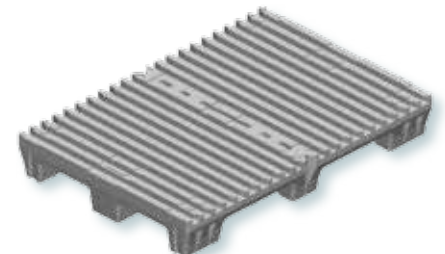
**P106RS00-A**

41.8" x 29.9" x 6.8"  
106.1 x 76 x 17.3 cm



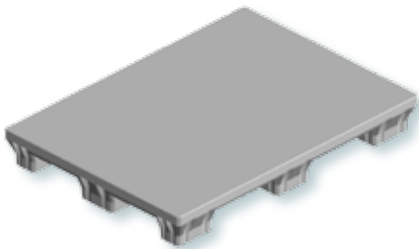
**P4230RS00**

42.3" x 29.5" x 6.8"  
107.5 x 75 x 17.3 cm



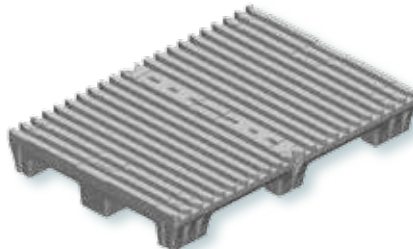
**P4231S00**

42" x 30.5" x 6"  
106.7 x 77.5 x 15.2 cm



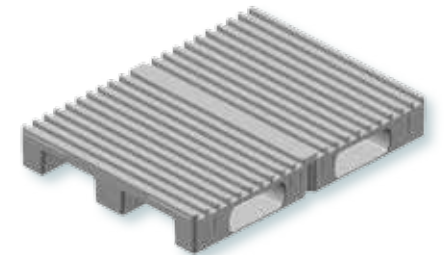
**P107RS00-A**

42.3" x 29.5" x 6.8"  
107.5 x 75 x 17.3 cm



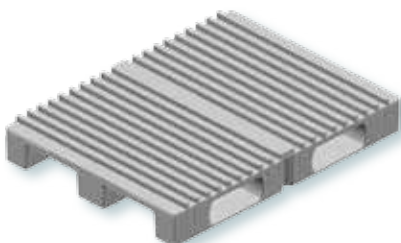
**P108RS108-Ab**

42.3" x 31.7" x 6.9"  
107.5 x 80.5 x 17.5 cm



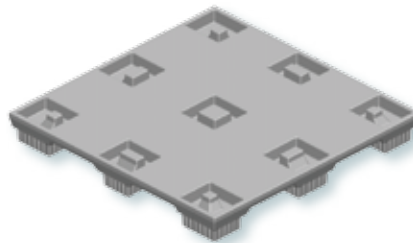
**P108RS108-Ab2**

42.3" x 31.7" x 6.9"  
107.5 x 80.5 x 17.5 cm



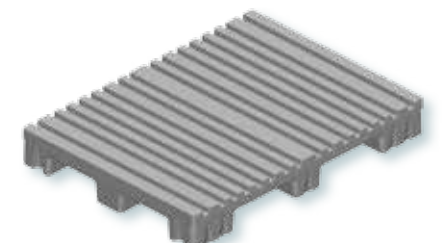
**P4444S00**

44" x 44" x 6"  
111.8 x 111.8 x 15.2 cm



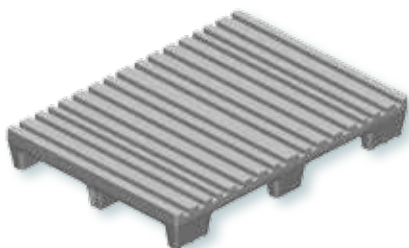
**P4433RS00**

44.9" x 33.5" x 6.9"  
114 x 85.1 x 17.5 cm

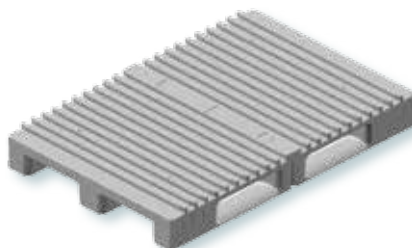




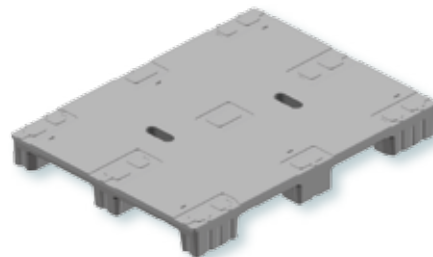
P4533RS00  
45" x 33" x 7.3"  
114.3 x 83.8 x 18.5 cm



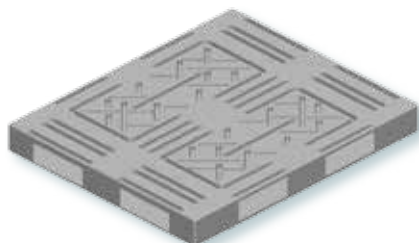
P120RS120-A  
47.2" x 31.5" x 6.9"  
120 x 80 x 17.5 cm



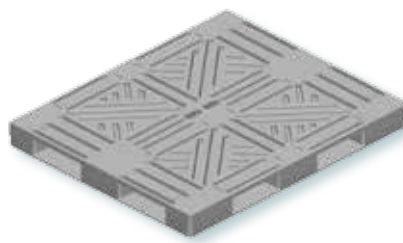
P4836S00  
48" x 36" x 6.2"  
121.9 x 91.4 x 15.7 cm



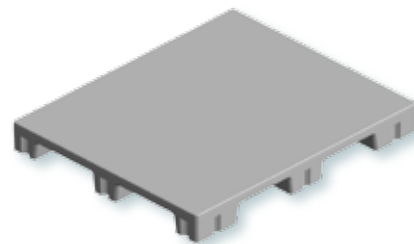
P4840DS00  
48" x 40" x 5.5"  
121.9 x 101.6 x 14 cm



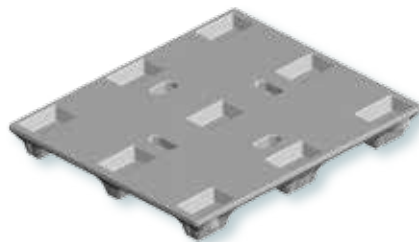
P4840DS00-LP  
48" x 40" x 5"  
121.9 x 101.6 x 12.7 cm



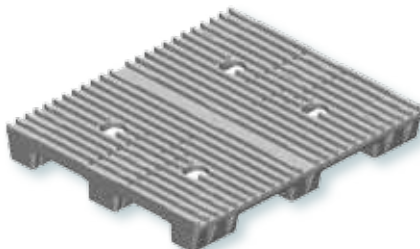
P4840S00  
48" x 40" x 6"  
121.9 x 101.6 x 15.2 cm



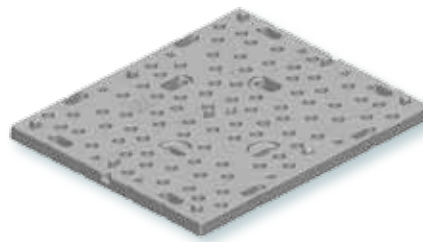
P4840NST  
48" x 40" x 6"  
121.9 x 101.6 x 15.2 cm



P4840RS00  
47.7" x 40.6" x 6.8"  
121.2 x 103 x 17.3 cm



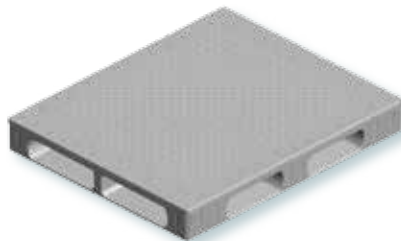
P4840S00-CAP  
48" x 40" x 2.75"  
121.9 x 101.6 x 7 cm



P4840SLW  
48" x 40" x 5.2"  
121.9 x 101.6 x 13.3 cm



P4840S136-PIKB  
48" x 40" x 6.75"  
121.9 x 101.6 x 17.1 cm

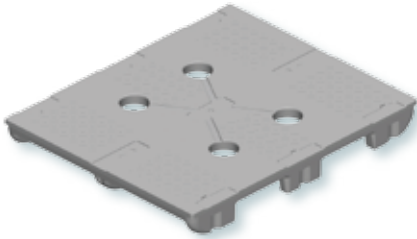


Visit Our Website  
to See Our  
Pallets in Action!

[www.pallets.com](http://www.pallets.com)

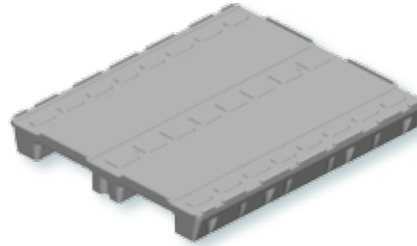
**P4840S00-SSSW**

48" x 40" x 6"  
121.9 x 102 x 15 cm



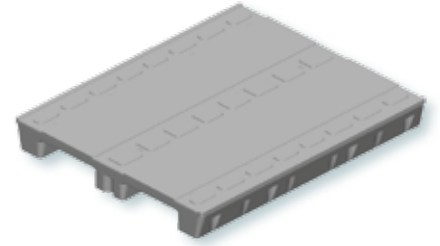
**P4840LS00-3R**

48.5" x 40.5" x 6.8"  
123.2 x 102.9 x 17.3 cm



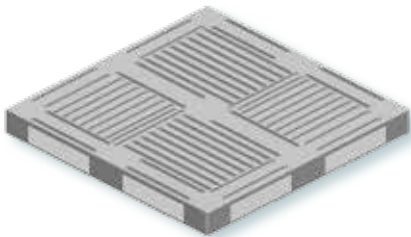
**P4840S00-3R**

48" x 40" x 6.2"  
122 x 102 x 15.7 cm



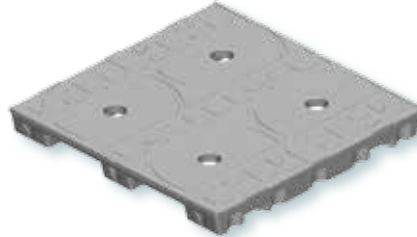
**P4848DS00**

48" x 48" x 5.5"  
121.9 x 121.9 x 14 cm



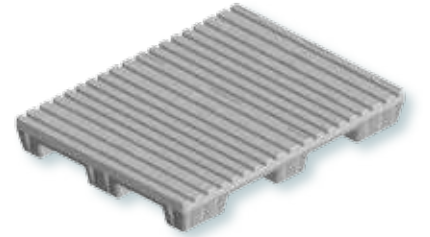
**P4848S00-3RB**

48.5" x 48.5" x 6"  
123.2 x 123.2 x 15.2 cm



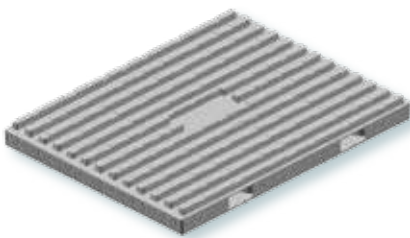
**P5038RS00**

49.8" x 37.6" x 7"  
126.5 x 95.5 x 17.8 cm



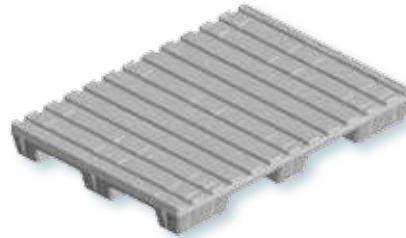
**P5166RS00**

51" x 66" x 6.3"  
129.5 x 167.6 x 16 cm



**P5539RS00**

55" x 39.3" x 7"  
139.7 x 99.8 x 17.8 cm



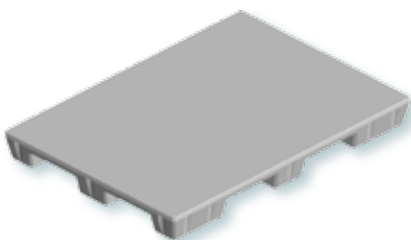
**P5539RS00-A**

55" x 39.3" x 7"  
139.7 x 99.8 x 17.8 cm



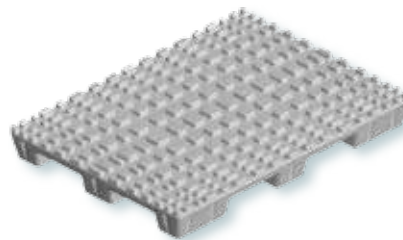
**P5539S00**

55.3" x 39.3" x 6"  
140.5 x 99.8 x 15.2 cm



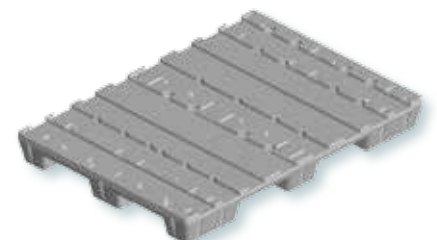
**P5539RS55-D**

55" x 39.3" x 7"  
139.7 x 99.8 x 17.8 cm



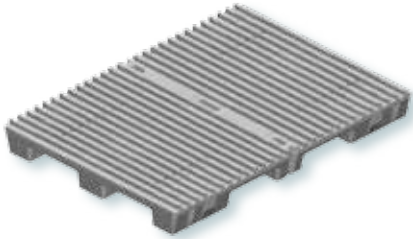
**P5539RS00-ACER**

55" x 39.3" x 7"  
139.7 x 99.8 x 17.8 cm

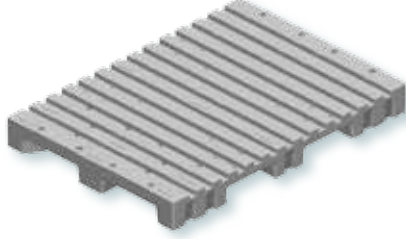




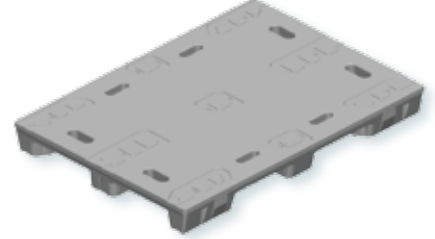
P143RS143-Ab  
56.5" x 40.4" x 6.8"  
143.5 x 102.5 x 17.3 cm



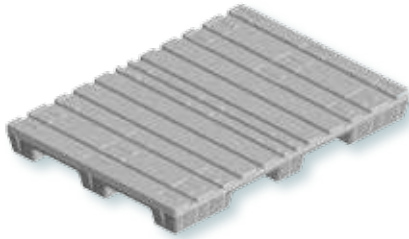
P5640RS28  
56.3" x 40.2" x 6.8"  
143 x 102 x 17.2 cm



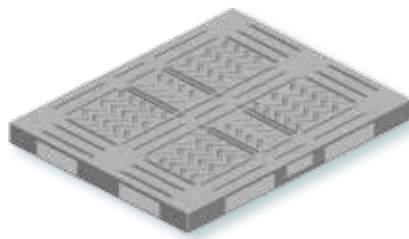
P143S00  
56.5" x 40.4" x 6.4"  
143.5 x 102.5 x 16.2 cm



P6043RS00  
60.8" x 43.5" x 7"  
154.4 x 110.5 x 17.8 cm



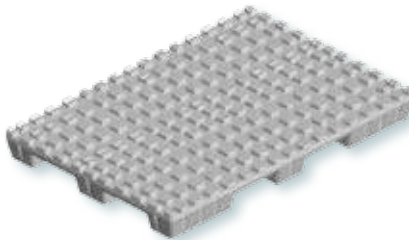
P6048DS00-M  
60" x 48" x 5.5"  
152.4 x 121.9 x 14 cm



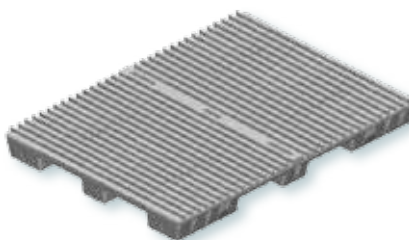
P6343RS63  
63.5" x 42.8" x 7"  
161.3 x 108.7 x 17.8 cm



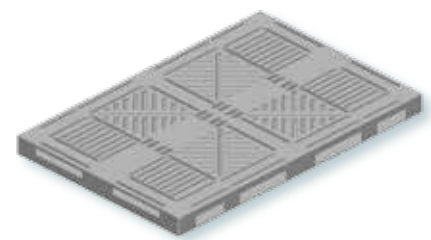
P6343RS63-D  
63.5" x 42.8" x 7"  
161.3 x 108.7 x 17.8 cm



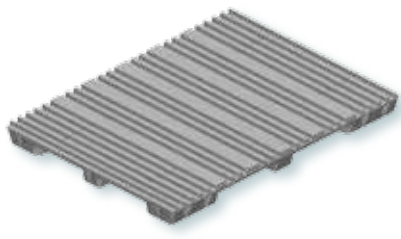
P164RS164-Ab  
64.4" x 47.2" x 6.9"  
164 x 120 x 17.5 cm



P7248DS00DN-WF  
72" x 48" x 5.5"  
182.9 x 121.9 x 14 cm



P205RS205-M  
81.9" x 60" x 7.2"  
208 x 152.5 x 18.4 cm



Visit Our Website  
to See Our  
Pallets in Action!  
[www.pallets.com](http://www.pallets.com)



www.pallets.com

1-800-PALLETS

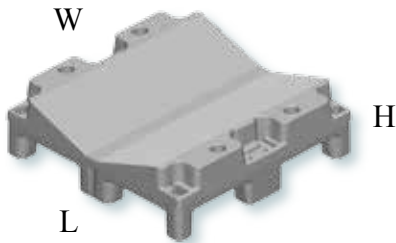
# Cradle Roll Pallets

Stratis' cradle style roll pallets are for the protection of rolls in work in process, storage and transport. For film, paper, metal or any material in a cylindrical shape. Carries loads up to 10,000 lbs. (4,536 Kg) with internal molded steel reinforcement. Can handle rolls up to 62.5 inches (158.75 cm) in diameter. Contact us so we can recommend a roll pallet that works for you.

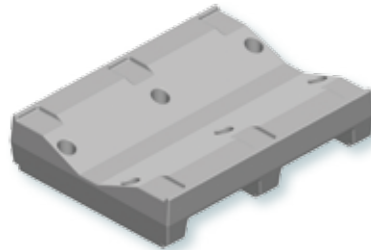
## Key Features:

- Durable (10+ years life)
- Cradle style to hold various size rolls
- Rackable (Drive-in and Selective)
- Safety stacking features/ Nestable
- Effective in all process areas and closed loop shipping
- One piece solid-wall molded construction
- Clean for food and flexible packaging hygiene requirements

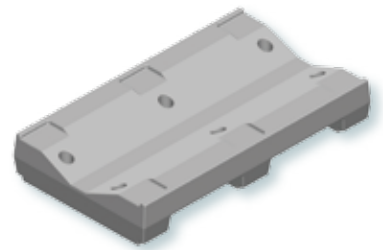
**RP2727S00-B**  
27"(L) x 27"(W) x 9.5"(H)  
68.6 x 68.6 x 24.1 cm



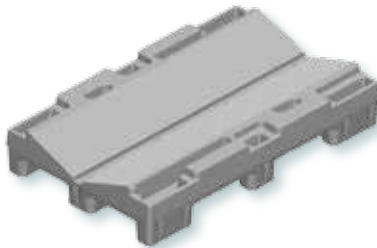
**RP2736S00-B31**  
27.25" x 35.5" x 8.3"  
69.3 x 90.2 x 21 cm



**RP2848S00-B40**  
27.5" x 47.75" x 8.3"  
69.9 x 121.3 x 21 cm



**RP3048S00-B**  
30" x 48" x 9.5"  
76.2 x 121.92 x 24.1 cm



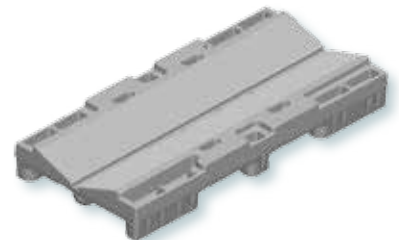
•Bookends Available

**RP3148S00-4SB**  
31.7" x 48.5" x 10.2"  
80.5 x 123.2 x 25.9 cm



•Bookends Available

**RP3266S00-B**  
32" x 66" x 9.5"  
81.3 x 167.6 x 24.1 cm

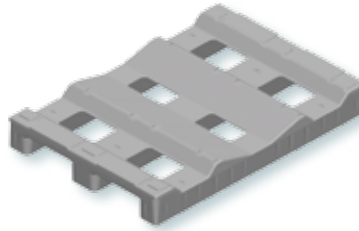


•Bookends Available

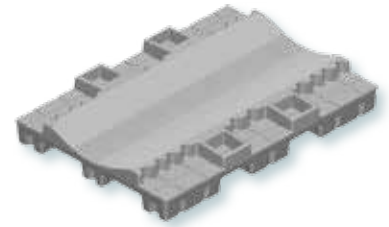
RP4248S00-B  
42" x 48" x 9.3"  
106.7 x 121.9 x 23.6 cm



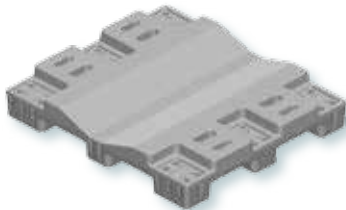
RP4431S00-B  
44" x 31" x 6"  
111.8 x 78.7 x 15.2 cm



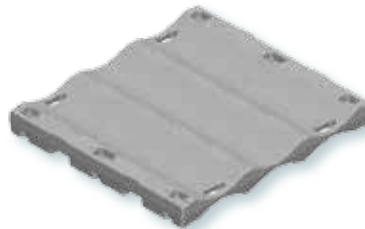
RP4462S00-B  
44" x 62" x 9.75"  
111.8 x 157.5 x 24.8 cm



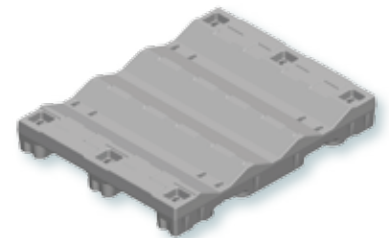
RP4842S00-B  
48" x 42" x 8.8"  
121.9 x 106.7 x 22.4 cm



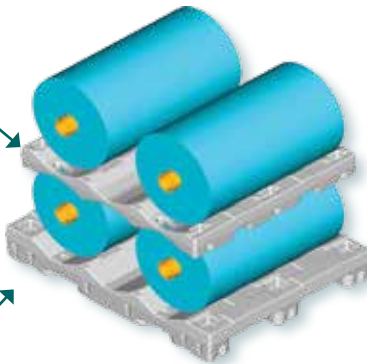
RP4642S00DIV-B  
46" x 42.5" x 5"  
116.8 x 108 x 12.7 cm



RP5442S00-B  
54" x 42.5" x 7.5"  
137.2 x 108 x 19.1 cm



RP4642S00DIV-B  
46" x 42.5" x 5"  
116.8 x 108 x 12.7 cm



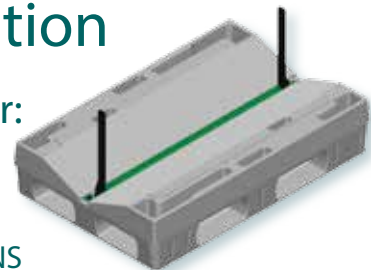
RP5442S00-B  
54" x 42.5" x 7.5"  
137.2 x 108 x 19.1 cm



### Safety in Slit Roll Transportation

Product Number:  
RPE3048-2

CALL TODAY FOR  
DETAILS AND OPTIONS

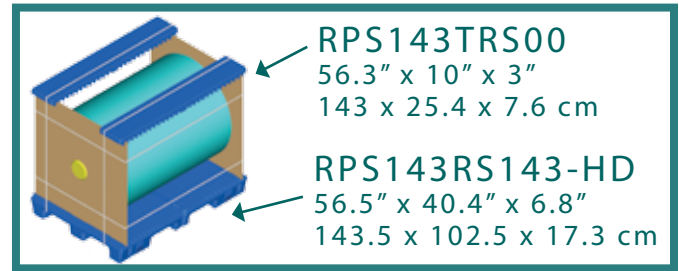


Bookends For Rolls



# Suspended Roll Pallets

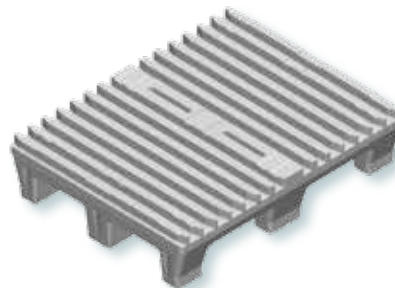
Stratis' suspended style roll pallets are for the protection of film, foil, and other materials that cannot touch surfaces during transport. Contact us so we can recommend a roll pallet that works for you.



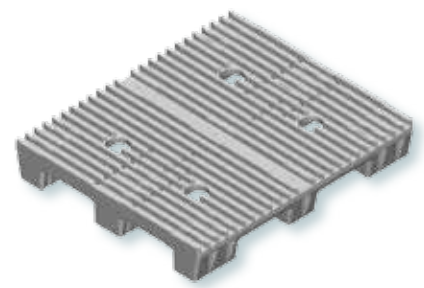
## Key Features:

- Durable (10+ years life)
- Holds 28" to 60" wide rolls (71 cm to 152cm)
- Hidden molded-in steel reinforcement
- One piece solid-wall molded construction
- Stackable and Rackable
- Deck-Lok for safe stacking and return

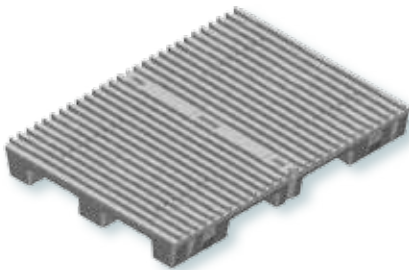
**RPS79RS79**  
31.3" x 24.3" x 6.7"  
79.4 x 61.6 x 17 cm



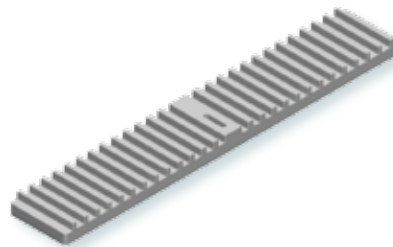
**RPS4840RS48-HD**  
47.7" x 40.6" x 6.8"  
121.2 x 103 x 17.3 cm



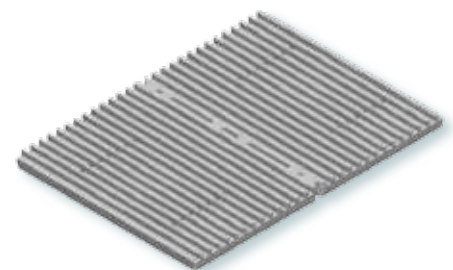
**RPS143RS143-HD**  
56.5" x 40.4" x 6.8"  
143.5 x 102.5 x 17.3 cm



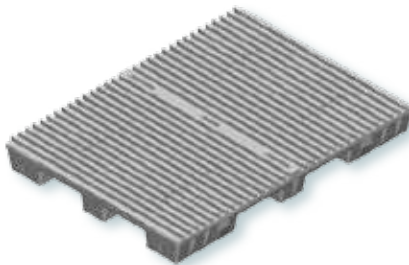
**RPS143TRS00**  
56.3" x 10" x 3"  
143 x 25.4 x 7.6 cm



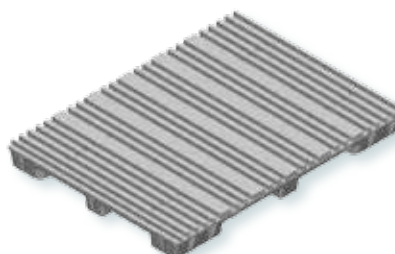
**RPS143RS00BRD**  
56.5" x 40.4" x 3"  
143.5 x 102.5 x 7.6 cm



**RPS6447RS64-HD**  
64.5" x 47.2" x 7"  
163.8 x 120 x 17.8 cm



**RPS8260RS82-HD7**  
81.9" x 60" x 7.2"  
208 x 152.5 x 18.4 cm



## Stratis Plastic Pallets vs. Wood Pallets

Comparison



# Racking Solutions

Almost all Stratis Pallets are able to be used in racking situations. Please let us know what style you have and we can tell you what pallet size and specification is right for you.



Underneath View Selective Rack



Selective/Conventional Rack with Decking



Underneath View Drive-in Rack

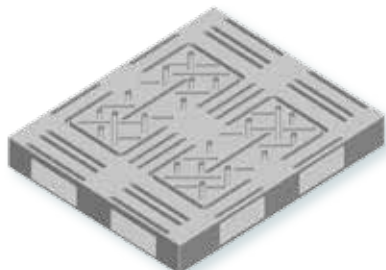


Side View Selective Rack with Three Runner Pallet

# Double Sided Pallets

P4840DS00

48" x 40" x 5.5"  
121.9 x 101.6 x 14 cm



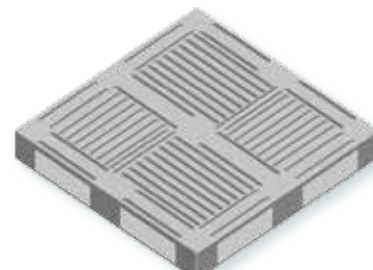
P4840DS00-LP

48" x 40" x 5"  
121.9 x 101.6 x 12.7 cm



P4848DS00

48" x 48" x 5.5"  
121.9 x 121.9 x 14 cm



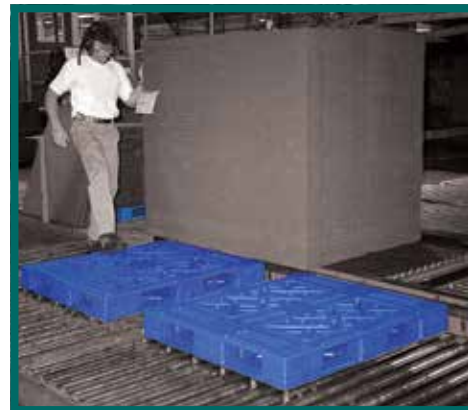
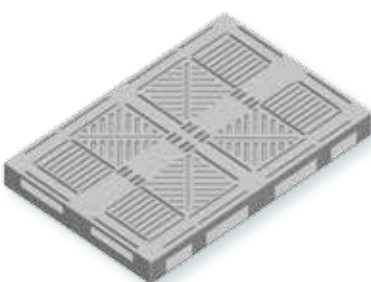
P6048DS00-M

60" x 48" x 5.5"  
152.4 x 121.9 x 14 cm



P7248DS00DN-WF

72" x 48" x 5.5"  
182.9 x 121.9 x 14 cm

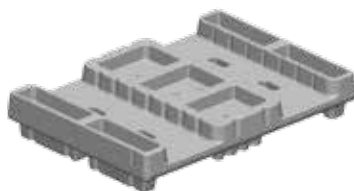


# Shuttle Pallets

Designed as "load removal slot" pallets. This "take it or leave it" style of pallet is excellent for storage and delivery of unitized corrugated sheets and boxes and leave the pallets behind. Pick the load off the pallets or carry the pallets with the load. For use when you need to pick a load off a pallet with forks only without damaging the pallet or product.

P4834LRS00-SW-B

48" x 34" x 8"  
121.9 x 86.4 x 20.3 cm



P4840LRS88-HD6

48" x 40" x 5.5"  
121.9 x 101.6 x 14 cm



P6048LRS00-SW-B

60" x 48" x 8"  
152.4 x 121.9 x 20.3 cm







# Stratis Sleeves

Stratis Sleeves are used as stacking blocks with forklift holes. Replaces slip-sheets and pallets for WIP and closed loop shipping of unitized loads that are self supporting and simply need separation in stacking and protection from bare forks in handling. Stratis Sleeves fit over forklift forks to provide protection for your product when moved or stacked.

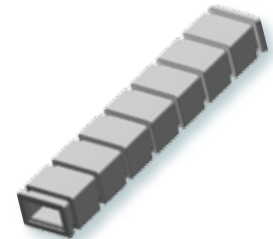
### Key Features:

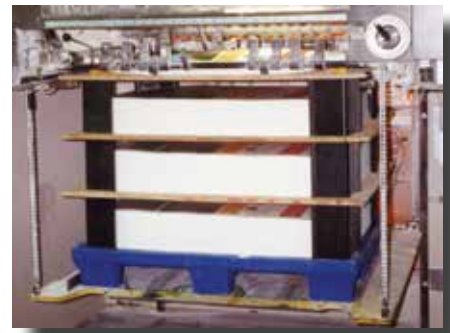
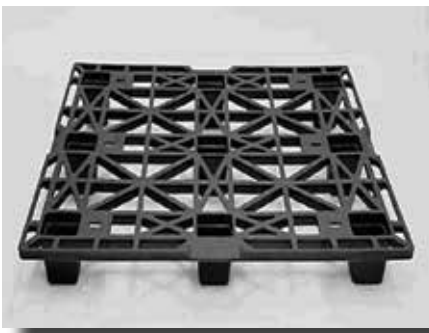
- Durable (10+ years life)
- One piece solid-wall molded construction
- Eliminate product damage caused by bare forks
- Effective in all process areas

### External Dimensions

### Opening

Model	Length	Width	Height	Width	Height
FS120	47.2" (120 cm)	8.7" (22 cm)	5.9" (15 cm)	6.5" (16.5 cm)	3.8" (9.5 cm)
FS150	59" (150 cm)	10" (25.5 cm)	5.9" (15 cm)	5.1" (13 cm)	3.5" (9 cm)
FS152	59.8" (152 cm)	8.7" (22 cm)	5.9" (15 cm)	6.75" (17.1 cm)	3.8" (9.5 cm)
FS175	68.9" (175 cm)	8.7" (22 cm)	5.9" (15 cm)	6.5" (16.5 cm)	3.8" (9.5 cm)
FS200	78.7" (200 cm)	8.7" (22 cm)	5.9" (15 cm)	6.5" (16.5 cm)	3.8" (9.5 cm)
FS225	88.6" (225 cm)	8.7" (22 cm)	5.9" (15 cm)	6.5" (16.5 cm)	3.8" (9.5 cm)
FS240	94.5" (240 cm)	8.7" (22 cm)	5.9" (15 cm)	6.75" (17.1 cm)	3.8" (9.5 cm)
FS250	98.4" (250 cm)	8.7" (22 cm)	5.9" (15 cm)	6.75" (17.1 cm)	3.8" (9.5 cm)
FS275	108.3" (275 cm)	8.7" (22 cm)	5.9" (15 cm)	6.75" (17.1 cm)	3.8" (9.5 cm)





[www.pallets.com](http://www.pallets.com)

1-800-PALLETS

# Export Pallets

Call today to find  
the right Export Pallet for you

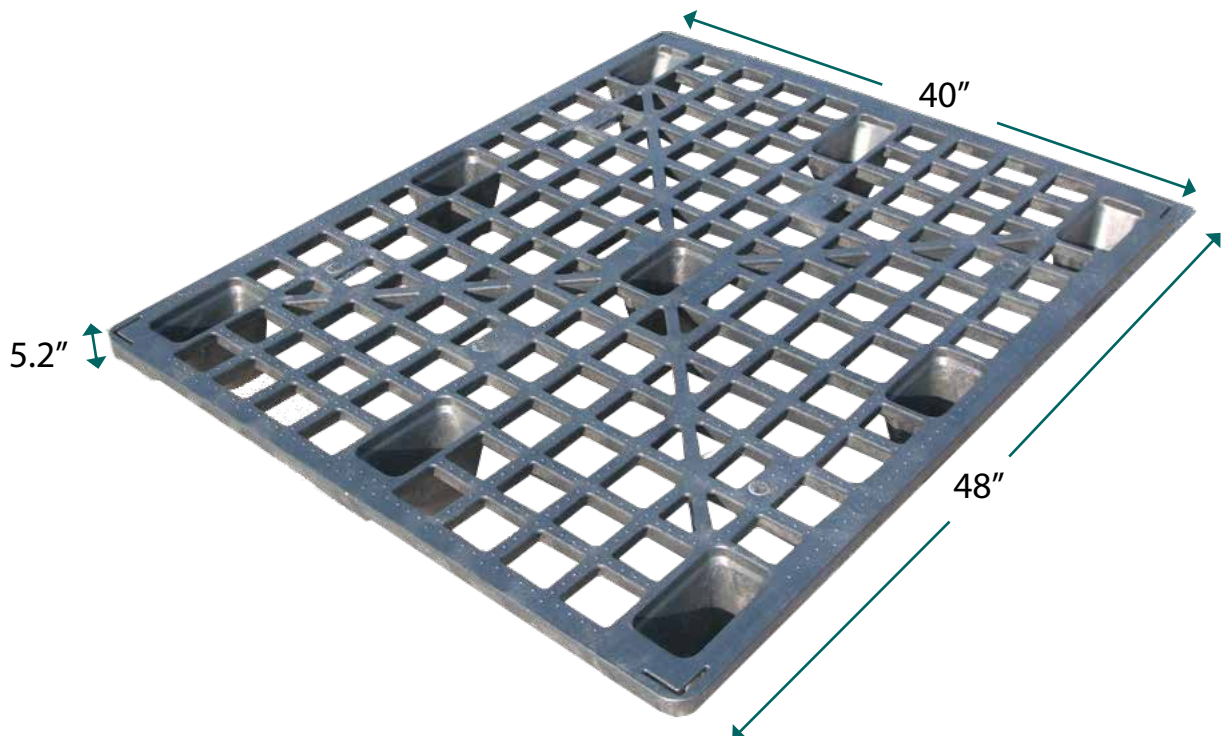
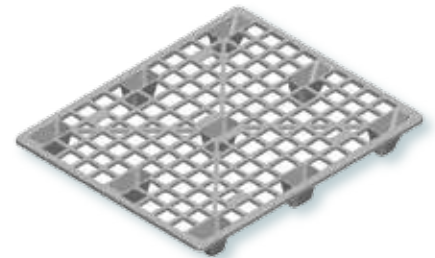
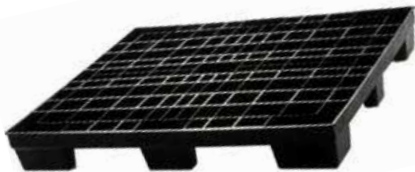
## Key Features:

- Satisfies all International Export Requirements
- Super lightweight reduces worker injury and shipping costs
- Designed for One-Way Shipping
- Nestable
- 4-Way fork entry
- Capacities: 6,000 - 12,000 lbs (2,272 - 5,443 Kg) static load, 3,000 - 3,500 lbs. (1,361 - 1,588 Kg) dynamic

P4840SLW

48" x 40" x 5.2"

121.9 x 101.6 x 13.2 cm

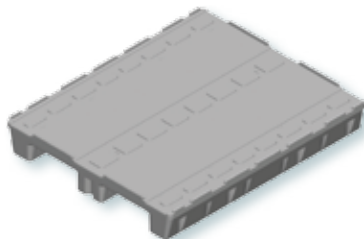


# Drum Pallets

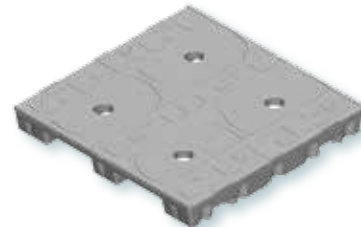
## Key Features:

- Safety stacking features
- Internal galvanized steel reinforcement
- One-piece solid wall molded construction
- For racking, stacking and transporting drums

- P4840LS128-DRUM-SWB  
48.5" x 40.5" x 6.8"  
123.2 x 102.9 x 17.3 cm



- P4848S144-DRUM-SWB  
48.5" x 48.5" x 6"  
123.2 x 123.2 x 15.2 cm



# Corner and Racking Boards

Carefully designed to meet the demanding need for racking and separating paper in the printing industry. Create a shelf arrangement with corner boards and racking boards. Replace plywood boards in storage systems.

## Key Features:

- Durable (10+ years life)
- Lightweight and easy to position
- Rigid for paper support
- easy to carry with under side Hand-holds
- Smooth surface will not splinter



## Plastic Racking Boards

Product Features:

- Lightweight, Easy to Position
- Thru-Deck Handholes
- Rigid for Paper Support
- Smooth, Will Not Splinter
- Durable & Economical

## Plastic Corner Boards

Product Features:

- Lightweight
- Durable
- Will Not Rust or Corrode
- Special 3/4" Return Angle for Stability

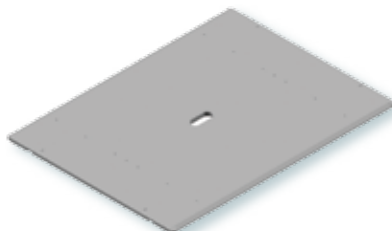
## Corner Boards

4" to 11.75"  
10.2 to 30.5 cm



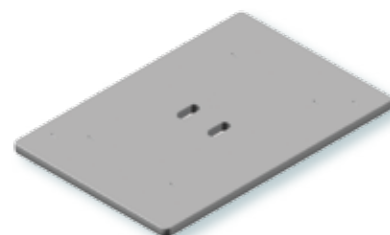
## Racking Board

- RB4332S43-HD8B  
43" x 32" x .79"  
109 x 81.4 x 2 cm



## Racking Board

- RB4530S00-B  
45" x 30.25" x 1.6"  
114.3 x 76.8 x 4.1 cm



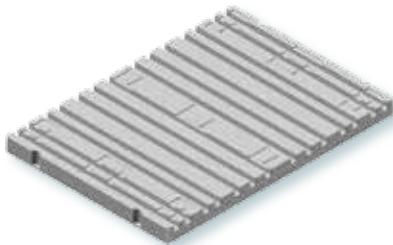


# Pallet Boards

Call Today about Custom Pallet Boards

Stratis pallet boards are like Stratis pallets except they have no legs. They are frequently used in conveyORIZED plants that move product and have automatic product loaders and unloaders. Users enjoy the same durability and strength typical of regular pallets including internal steel reinforcement options for unsupported flow rack storage areas. In some cases the pallet boards are used in conjunction with complementary Stratis pallets as caps or load protectors. The same patented Deck-Lok™ safety stacking system is generally incorporated into the board designs to enhance this type of use.

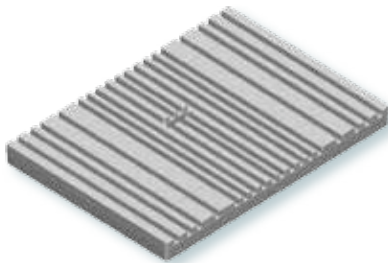
**P4029RS00BRD-X**  
40.5" x 28.8" x 2.5"  
103 x 73 x 6.4 cm



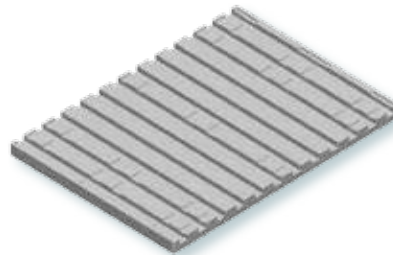
## Key Features:

- Durable (10+ years life)
- Safety stacking features
- Effective in all process areas
- One piece solid-wall molded construction
- Eliminate wood particles from product areas
- Conveyorable
- Rackable

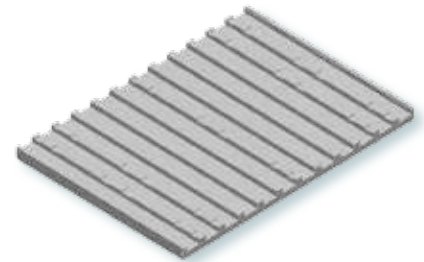
**P4130RS41BRD-HDX**  
41.3" x 29.9" x 2.9"  
105 x 76 x 7.3 cm



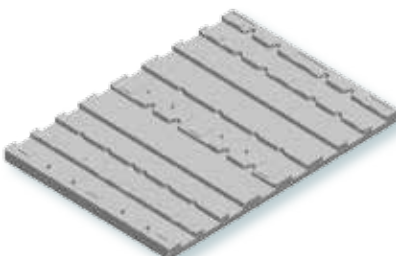
**P5539RS00BRD**  
55" x 39.3" x 2.5"  
139.7 x 99.8 x 6.4 cm



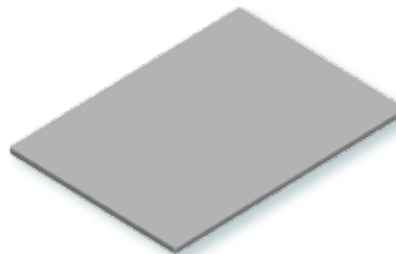
**P5539RS00BRD-A**  
55" x 39.3" x 2.5"  
139.7 x 99.8 x 6.4 cm



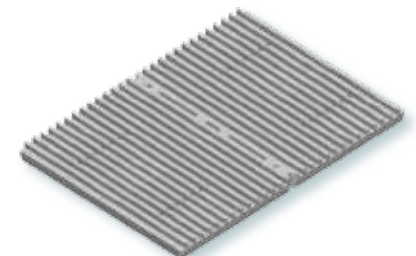
**P5539RS00BRD-ACER**  
55" x 39.3" x 2.5"  
139.7 x 99.8 x 6.4 cm



**P5539S00BRD**  
55.3" x 39.3" x 1.5"  
140.5 x 99.8 x 3.8 cm



**P143RS00BRD-A**  
56.3" x 40.6" x 3"  
143 x 103 x 7.6 cm



To determine a pallet's suitability within your environment, we recommend that you purchase one or two Stratis pallets to test.

www.pallets.com

1-800-PALLETS

# What you need to know:

## STEEL REINFORCEMENT OR NOT?

Even Stratis plastic pallets are not as rigid as an oak board. But, when galvanized steel reinforcement is invisibly molded into the deck, the rigidity exceeds that of wood. Examine your handling procedures to decide if the load is always adequately supported by either the floor, conveyors, or other handling equipment. Also, consider whether a small amount of "give" in the pallet is a concern. Steel reinforcement in Stratis pallets, ordered in the appropriatedirection, eliminates deflection. In some cases it serves to redistribute the effect of "point loading" too. Consult a Stratis representative.

## CONVEYOR SYSTEMS

All Stratis pallets can be conveyed on automatic systems and used in palletizers. The conveyor or palletizer must be compatible with the pallet. For example, long-runner pallets flow well on roller conveyors one way but may not when turned 90 degrees, depending on the roller centers and the width of the runners. Most Stratis pallets were designed to flow on standard conveyors.

## PALLET RACK SYSTEMS

Stratis pallets (with internal steel reinforcement) can be successfully used in "drive-in" or "edge rack" systems. The steel reinforcement in the pallets needs to span the distance between the edges of the rack. Stratis pallets can also be used in conventional/selective rack systems that have two supporting crossbars. These racks might require Stratis pallets to have steel reinforcement in the direction perpendicular to the rack's crossbars.

## TEMPERATURE

Stratis solid-wall molded pallets withstand temperatures in freezer environments to minus 40° F (-40°C).

## LOAD CAPACITY

All Stratis pallets with the exception of the 'export pallet' have a static load capacity exceeding 10,000 lbs. (4,536 Kg) with even load distribution, and some are in the 20,000 + lbs. (9,072 Kg) range. The key to "moving load" capacity depends on load distribution and handling devices, not total weight. Point loading must also be considered. Internal Steel reinforcement allows 3000+ lbs. (1,361 Kg) loads in unsupported racks.

## Why make the change to Stratis pallets?

Stratis Pallets are replacing wood and other plastic pallets at an ever increasing rate in manufacturing and distribution environments. More and more companies realize that lightweight, splinter-free, recyclable plastic pallets are cost effective. Stratis Plastic Pallets are generally a capital investment and require cost justification. Here is a payback analysis to let you compare wood with Stratis Plastic Pallets. To determine your Return on Investment, use 10+ years for the projected life of Stratis pallets. (The life-time of Stratis pallets will depend on the nature of your operation and the manner in which your materials handling system treats pallets.)

### COST ANALYSIS

Monthly Purchase of non-Stratis pallets	\$ _____
Monthly repair cost of non-Stratis pallets	\$ _____
Monthly cost of damaged products due to broken non-Stratis pallets	\$ _____
Monthly cost of hours lost due to injuries resulting from non-Stratis pallets	\$ _____
Monthly cost of hours associated with purchasing, warehousing, receiving and freight transportation for expendable non-Stratis pallets	\$ _____
<b>Total Monthly Cost of Expendable Non-Stratis Pallets</b>	<b>\$ _____</b>
<b>One Time Cost of Stratis Plastic Pallets</b>	<b>\$ _____</b>

### PAYBACK CALCULATION

(divide acquisition of Stratis Pallets by monthly cost of non-Stratis pallets) \_\_\_\_\_ months



Accepted



USDA, FDA and HACCP Approved



Headquarters:

4700 Fremont Street • Lincoln, NE • 68504 USA

Ph: +1 317-328-8000 • Fax: +1 402-465-1220

Toll Free: 1-800-PALLETS (725-5387) [USA & Canada]

Email: [sales@pallets.com](mailto:sales@pallets.com)