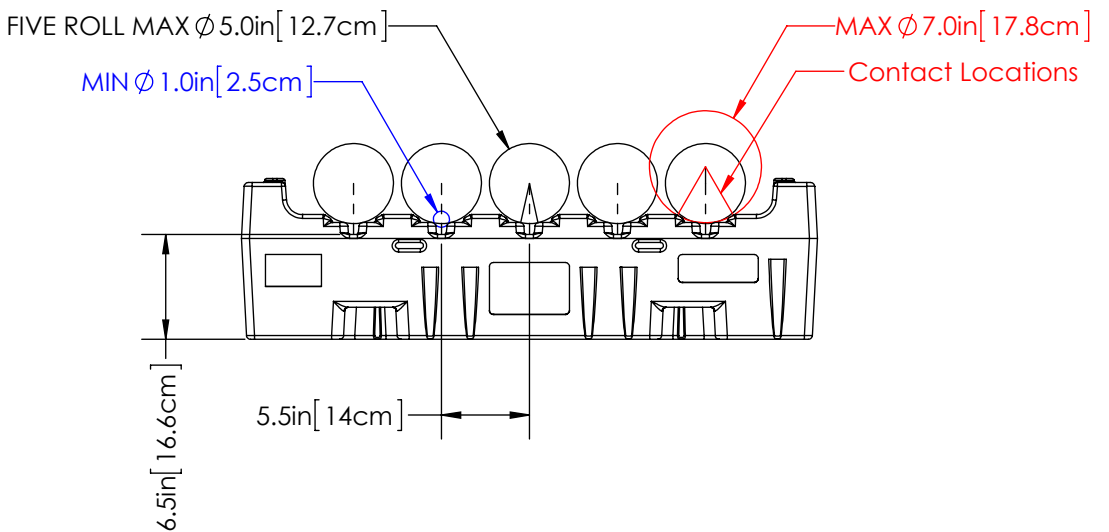
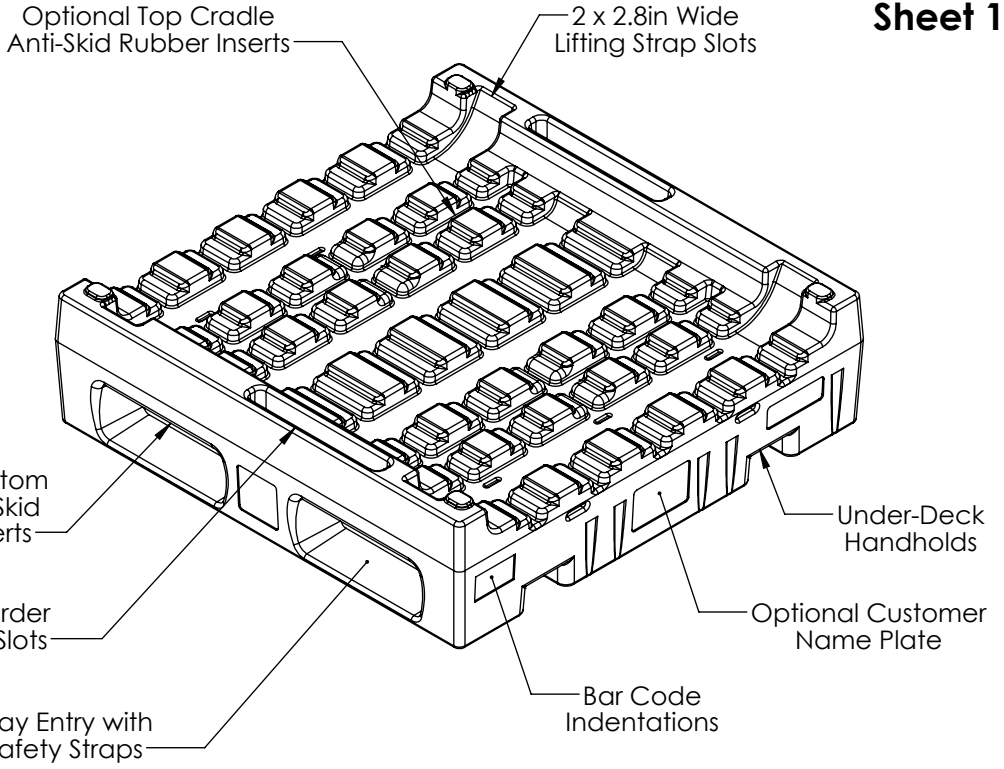


OVERALL DIMENSIONING
 36.0" x 36.0" x 10.0"
 91.4cm x 91.4cm x 25.5cm

- PALLET FEATURES:**
 MOLDED-IN INTERNAL STEEL REINFORCEMENT - 4 BARS STANDARD
 FULL 2-WAY ENTRY, FORKLIFT AND PALLET JACK
 UNDER-DECK HANDHOLDS
 SAFETY STACKING
 BAR CODE INDENTATIONS
 LIFTING STRAP SLOTS
 WORK ORDER PAPER SLOTS
 OPTIONAL CUSTOMER NAME PLATE
 OPTIONAL 3 CRADLE TOP - RHRPT3338
 TOP CRADLE ANTI-SKID RUBBER INSERTS
 BOTTOM FORKLIFT ANTI-SKID RUBBER INSERTS

ALL DIMENSIONS ARE IN INCHES, NOMINAL, & SUBJECT TO CHANGE WITHOUT NOTICE.
ALL DIMENSIONS ON MOLDED PARTS ARE SUBJECT TO A ± 3% TOLERANCE.



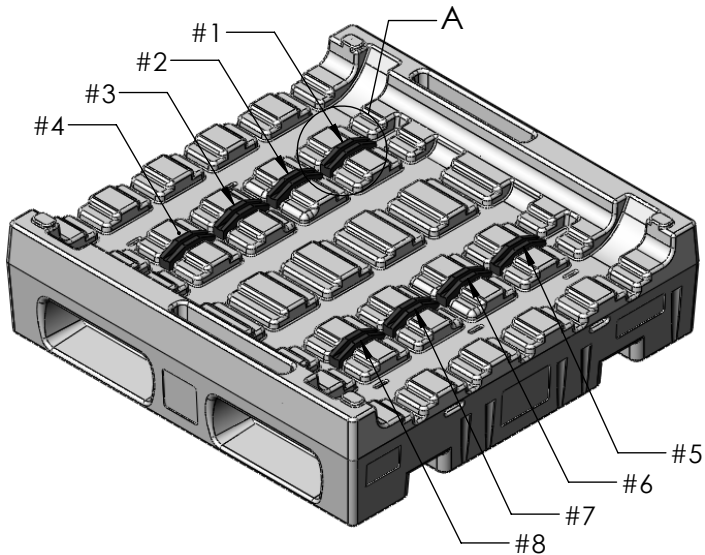
DO NOT SCALE		DRAWN BY	DATE	TITLE: Stratis Pallet		REVISION
STATUS: Released		RS	12/04/2014	PART NO. RHRP36365CS00		SHEET 1 OF 2
© SNYDER INDUSTRIES INC., 2014				ENG. ID. D003285		
ALL DIMENSIONS, DESIGNS, AND INFORMATION ON THIS PRINT MUST BE CONSIDERED PROPRIETARY TO SNYDER INDUSTRIES, INC. AND MAY NOT BE USED, COPIED, OR DISTRIBUTED WITHOUT WRITTEN PERMISSION OF AN OFFICER (OR HIS AGENT) OF THE FIRM.				Snyder Industries Inc. 4700 Fremont Street P.O. Box 4583 Lincoln, NE 68504 +1(402)467-5221 www.pallets.com		

ANTI-SKID RUBBER INSERT LOCATIONS

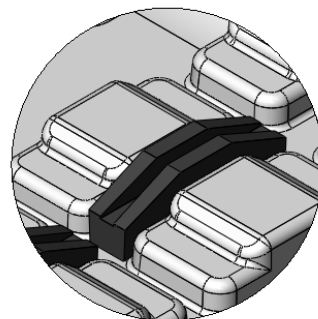
1. **Top Cradle Anti-Skid Rubber Inserts**
 - a) 8 Inserts located in the second channel from the end, 4 per side - STANDARD
2. **Bottom Forklift Anti-Skid Rubber Inserts**
 - a) 4 Inserts located by each fork entry, 2-way entry with 2 per side - STANDARD

Standard Part Number - RHRP36365CS72-HD4-AR8BT4

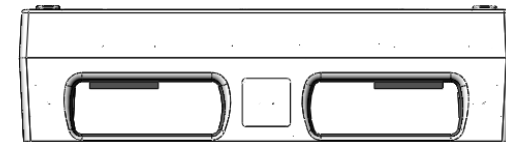
1a)



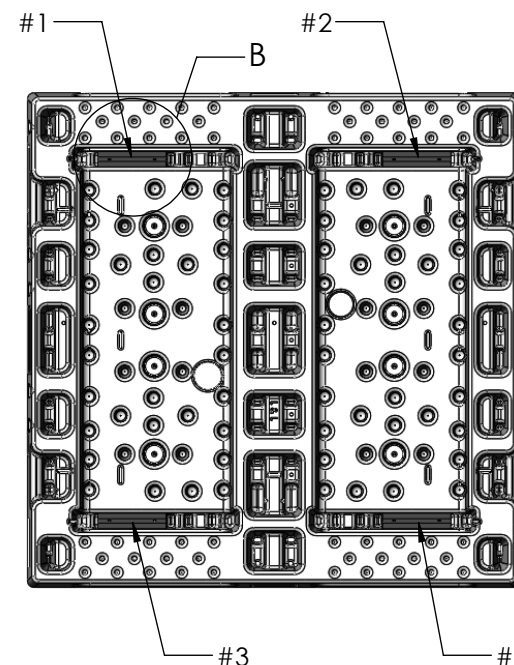
2a)



DETAIL A
SCALE 1 : 4

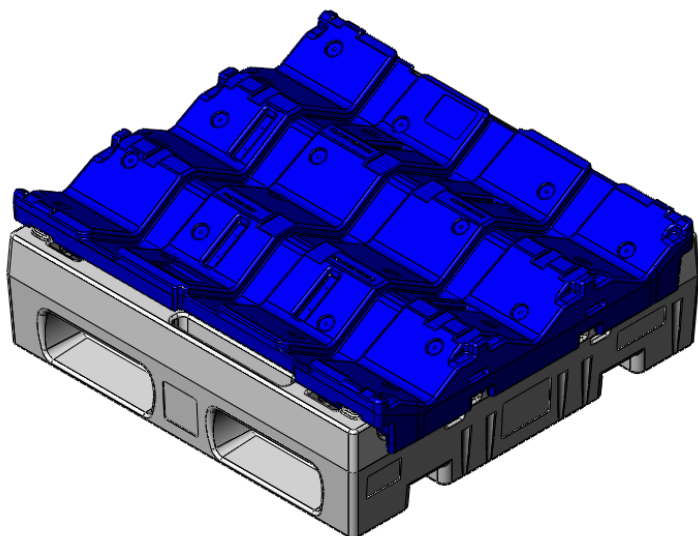


FORK ENTRY VIEW



DETAIL B
SCALE 1 : 4

OPTIONAL 3 CRADLE TOP - RHRPT3338



ALL DIMENSIONS ARE IN INCHES, NOMINAL, & SUBJECT TO CHANGE WITHOUT NOTICE.
ALL DIMENSIONS ON MOLDED PARTS ARE SUBJECT TO A ± 3% TOLERANCE.

DO NOT SCALE	DRAWN BY	DATE	 Snyder Industries Inc. 4700 Fremont Street P.O. Box 4583 Lincoln, NE 68504 +1(402)467-5221 www.pallets.com	TITLE:	REVISION
STATUS:	RS	12/04/2014		Stratis Pallet	
© SNYDER INDUSTRIES INC., 2014				PART NO.	SHEET
ALL DIMENSIONS, DESIGNS, AND INFORMATION ON THIS PRINT MUST BE CONSIDERED PROPRIETARY TO SNYDER INDUSTRIES, INC. AND MAY NOT BE USED, COPIED, OR DISTRIBUTED WITHOUT WRITTEN PERMISSION OF AN OFFICER (OR HIS AGENT) OF THE FIRM.				RHRP36365CS00	2 OF 2
				ENG. ID.	
				D003285	